

## Slot 2 LED Surface Mount

The Slot LED family of luminaires offers an unparalleled package of performance and features for your next lighting project. Our complete set includes two aperture sizes, three mounting types, three lighting distributions and six fixture lengths. Precision lumen DIRECTIR optics deliver optimized light where needed and are available in standard and high lumen outputs. With other key features such as simplified installation, seamless controls integration and superior color and quality, the Slot LED family from Mark Lighting offers exceptional quality and design flexibility.

Type:

Project:

Catalog Number:

DO NOT TYPE HERE. Autopopulated field.

## Specification Features (continued on page 2)

### Housing

Nominal 2.5" x 3.75" extruded aluminum housing

### Finish

White, Black or Silver powdercoat

### Reflector

Extruded aluminum with high reflectance white powdercoat

### Fixture Performance

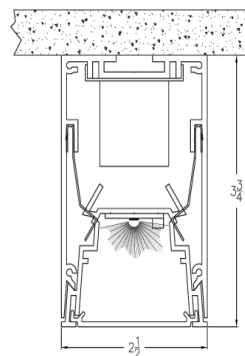
4FT INDIVIDUAL (35K)	DIRECT	
Lumens Output	Normal	High
Delivered Lumens	2,060	4,120
Input Watts	28	54
Lumen/Watt	74	76

\* Consult factory for customized lumen output and wattage

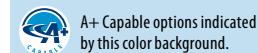
### Shielding

Extruded 90% transmissive acrylic lens with a textured surface providing diffuse illumination and a uniform appearance for direct lambertian distribution (No Optics). Straight blade louver shield supplied for Wall Wash (WW) and Wall Graze (WG) distributions. Louver will be painted to match housing. Clear Acrylic dustcover (DC) is available for the indirect distribution only.

## Technical Drawing



Surface Mount



## Ordering

Example: S2LS 4FT 1N35WW L735SQ EZB 120 WHT EMPK

Series	Length	Downlights <sup>1,2,3</sup>	Downlight Color Temp	Downlight Aperture	Driver	Voltage	Finish	Controls
S2LS Surface Mount	2FT 2' 3FT 3' 4FT 4' 5FT 5' 6FT 6' 7FT 7' 8FT 8' _FT Specify continuous run length (in whole feet)	(Blank) Linear LED only  L7 10W LED MR16 (700lm)	(Blank) Linear LED only  27 2700K ≥80 CRI 30 3000K ≥80 CRI 35 3500K ≥80 CRI+ 41 4100K ≥80 CRI+	RD Round SQ Square	EOHN Non-dimming EZB Constant current, 0-10V, 0.1% dimming to off  For other options see page2	120 277 347*	WHT White BLK Black SLV Silver	MSD9N <sup>5</sup> PIR & Microphonics Occupancy Sensor with 360° Coverage - ON/OFF Control DSCC <sup>6</sup> Closed loop photocell with continuous dimming EMPK <sup>6</sup> Emergency Battery Pack
		Distribution Type	Lumens	Color Temp	Optics			
		1 Direct Distribution	N Normal Output H High Output	30 3000K ≥80 CRI 35 3500K ≥80 CRI+ 40 4000K ≥80 CRI+	(Blank) No Optics WW Wall Washer WG Wall Graze Distribution			

### Notes:

- Downlights options not available for 2FT fixtures.
- Downlights are not adjustable and are provided with a solite lens.
- Downlight modules are supplied at each end of an individual unit. For other configurations, consult factory.
- Consult factory for 347V.
- Occupancy and Photocells are supplied at one end of an individual unit. Fixtures with downlighting require a remote sensor location; sensor and location by others. Requires external power pack or connection to nLight network.
- Remote mounted; consult factory for remote mounting options. Battery Pack will only light 12" section.



eldoLED  
your product | our drive



Specification Features (continued)

LED Components

Linear: Nichia®- 757 series LED chips (>80 CRI)

LED Life

Rated 55,000 hours (L80) at 25° C ambient temperature.

Color Consistency

The Acuity Brands circuit boards for the linear LED components use a precise binning algorithm which creates a consistent color temperature from board to board. The color a variation of no greater than a 2.5 Step MacAdam (2.5SDCM) along the black body locus from board to board.

Driver

eldoLED constant current driver options deliver choice of dimming range for ultra-smooth dimming resolution from 100% to less than 1% , and choices for control, while assuring flicker free, low current inrush, 89% efficiency and low EMI.

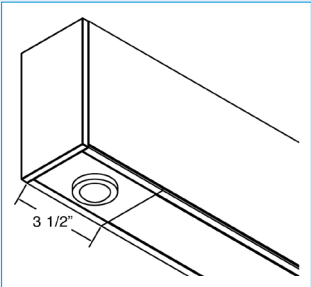
Slot LED Drivers

Driver Options	Dimming Protocol	Dimming Range	Integrated Controls
EOHN	Non-dimming	----	----
EZB	0 -10v	100 to 0.1%	----
EDAB	Dali	100 to 0.1%	----
ENCB*	0 -10v	100 to 0.1%	nLight
ENNB*	0 -10v	100 to 0.1%	nLight with generator supplied EM power
EESB*	0 -10v	100 to 0.1%	Lutron EcoSystem interface

\*Integral driver with remote mounted nLight or EcoSystem interface, consult factory for mounting options.

Integrated Controls

Optional nLight® integrated controls make Slot LED luminaires addressable-allowing them to digitally communicate with other nLight enabled controls such as dimmers, switches, occupancy sensors and photocontrols. Simply connect all the nLight enabled control devices using standard CAT5 Cabling.



Occupancy Sensor (MSD9N) and/or Photocell (DSCC)

A+ Capable Luminaire

This item is an A+ capable luminaire, which has been designed and tested to provide consistent color appearance and out-of-the-box control compatibility with simple commissioning.

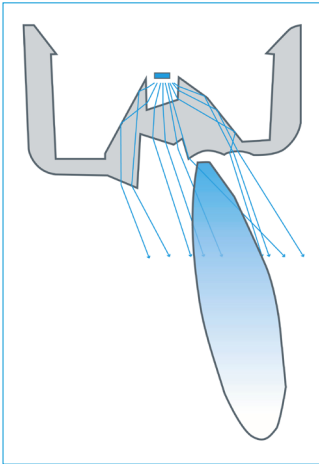
- All configurations of this luminaire meet the Acuity Brands' specification for chromatic consistency
- This luminaire is part of an A+ Certified solution for nLight® control networks when ordered with drivers marked by a shaded background\*
- This luminaire is part of an A+ Certified solution for nLight control networks, providing advanced control functionality at the luminaire level, when selection includes driver and control options marked by a shaded background\*

To learn more about A+, visit [www.acuitybrands.com/aplus](http://www.acuitybrands.com/aplus).

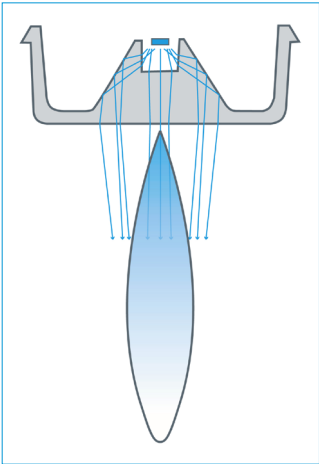
\*See ordering tree for details

Optics

Slot LED's patent-pending, precision lumen DIRECTIR optics condition and refract light to deliver accurately controlled, striation-free, and uniform white light. All lumen DIRECTIR optics are injection-molded, optical grade, UV-resistant acrylic with selective finishing/polishing treatment.



Wall Wash (WW)



Wall Graze (WG)

Certification

CSA Certified to meet U.S. and Canadian standards, assembled in the USA.

Warranty

5-year limited warranty. Complete warranty terms located at: [www.acuitybrands.com/CustomerResources/Terms\\_and\\_conditions.aspx](http://www.acuitybrands.com/CustomerResources/Terms_and_conditions.aspx)

**Note:** Actual performance may differ as a result of end-user environment and application.

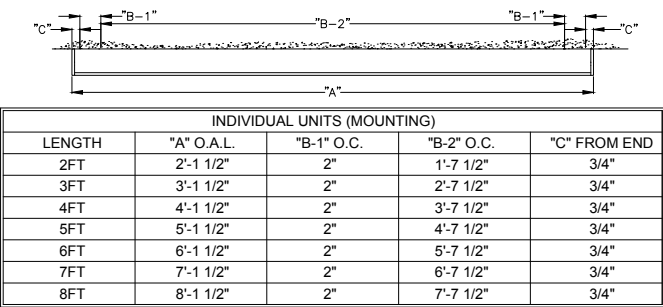
All values are design or typical values, measured under laboratory conditions at 25 °C.

Specifications subject to change without notice.

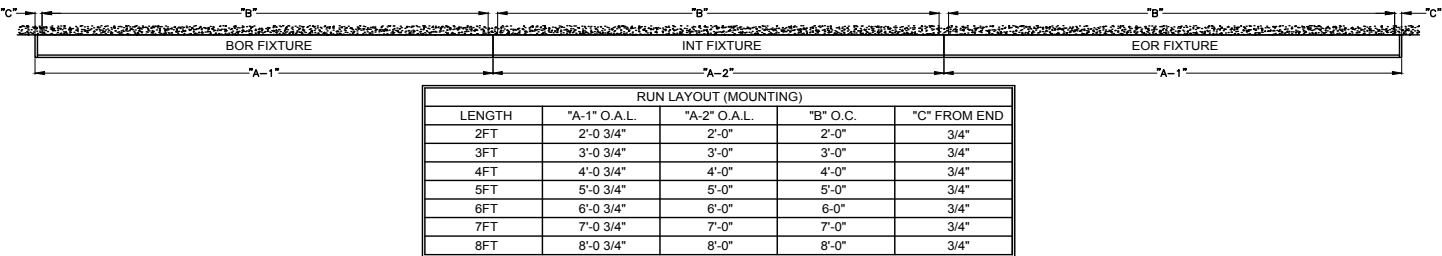
Photometry

For photometric information refer to [www.marklighting.com](http://www.marklighting.com).

Individual Fixture Configurations



Run Configurations

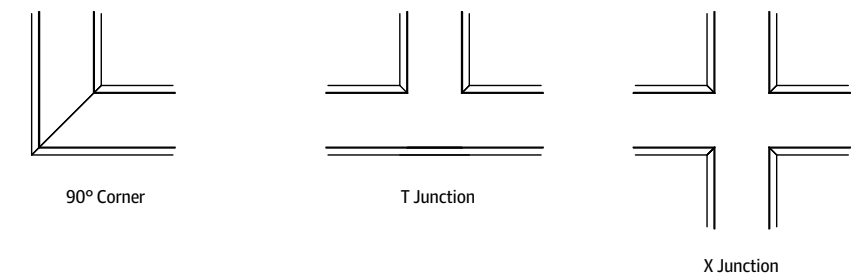


Continuous Runs

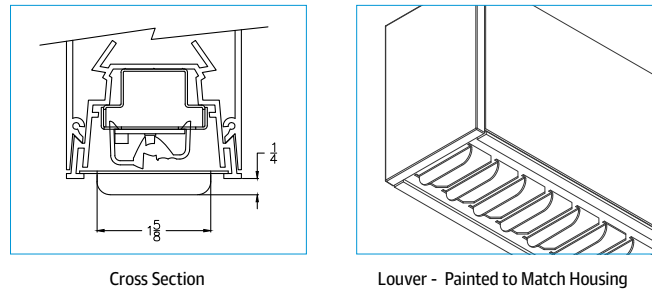
Slot 2 LED continuous rows can be configured in 1' increments and featuring the AEL precision joiner to create a hairline seam between luminaires, providing a monolithic visual aesthetic. (see AEL joiner information on page 4). For custom run lengths less than a 1' increment, consult factory.

Run Patterns, Corners and Junction

Slot 2 LED patterns be configured in 1' increments with illuminated 90° inside and outside corners, T junctions, and X junctions with standard 2' corner and junction lengths. For custom angles, corner or junction lengths, consult factory.

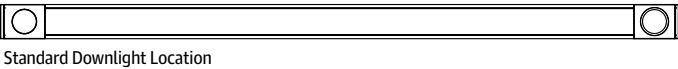


Wall Graze Shielding



Downlights

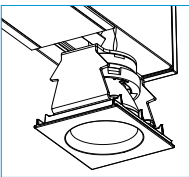
Optional downlights powered by Xicato Spot Modules are available with 4', 5', 6', and 8' length luminaires, maximum (2) Xicato downlights per length. Each downlight module is 10W with 700 lumens delivered. Downlights are supplied with a dedicated feed point and will be controlled separately.



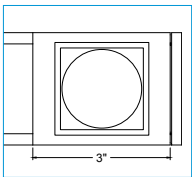
Standard Downlight Location



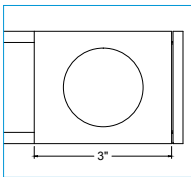
Other Downlight Configuration (consult factory)



Downlight Module

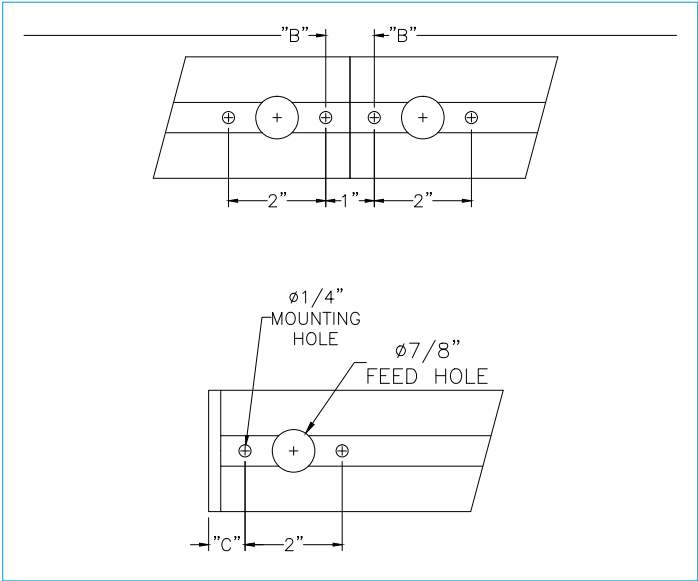


Square Downlight Plate (SQ)



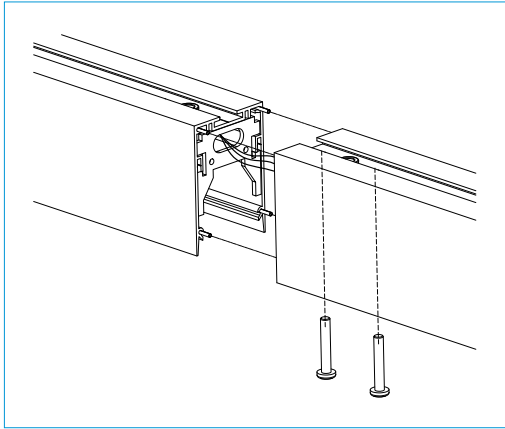
Round Downlight Plate (RD)

Mounting

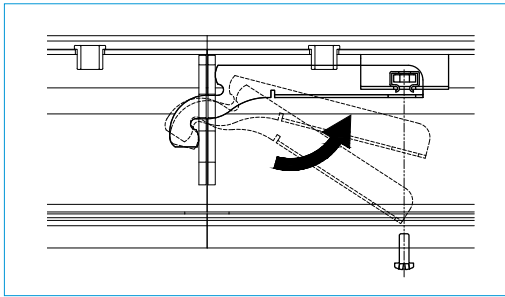


Joiners

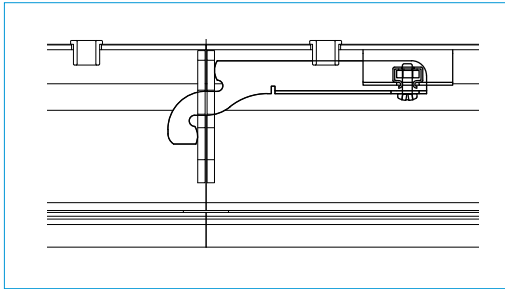
AEL Precision Row-Mount 3-step fixture-to-fixture connection method



Step 1: Align



Step 2: Engage



Step 3: Lock